

January 21, 2021

For Immediate Release

Real Estate Investment Trust

Japan Logistics Fund, Inc. (Security Code: 8967)
Representative: Naohiro Kameoka, Executive Director

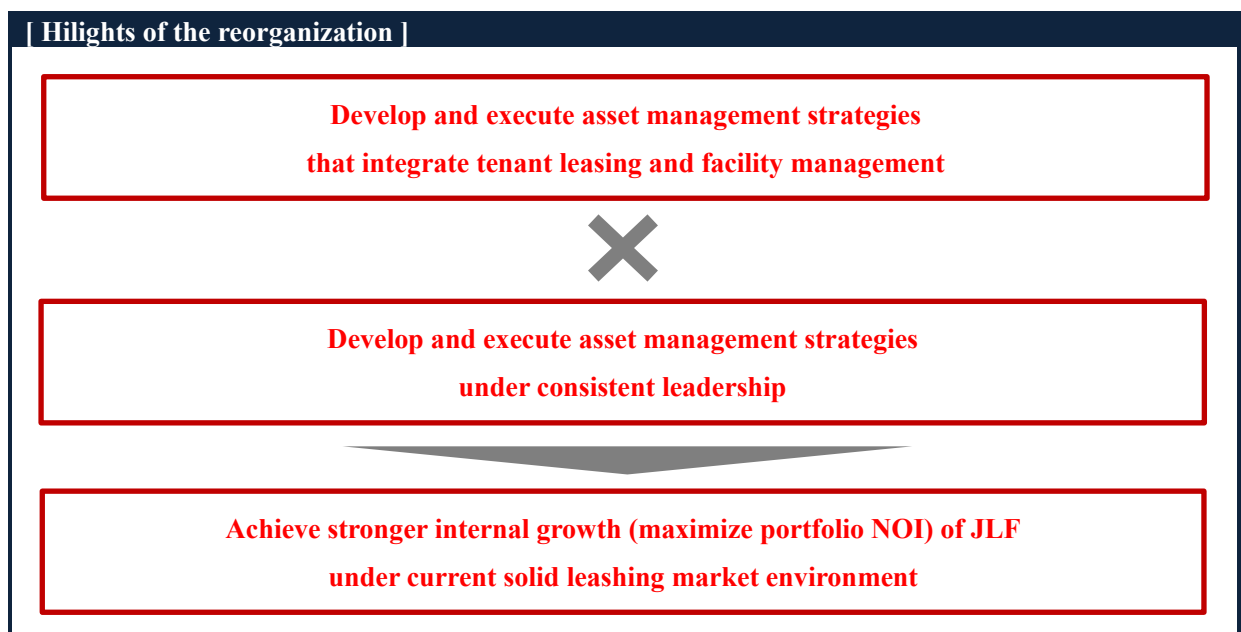
Asset Management Company

Mitsui & Co., Logistics Partners Ltd.
Representative: Naohiro Kameoka, President
Contact: Ryota Sekiguchi, Corporate Planning & Finance Dept.
TEL +81-3-3238-7171

**Notice Concerning Reorganization and Personnel Reassignment of
the Asset Management Company**

Japan Logistics Fund Inc. (hereafter referred to as “JLF”) announced today that Mitsui & Co., Logistics Partners Ltd. (hereinafter referred to as “MLP”), the asset manager of JLF, has decided to reorganize its corporate structure and reassign its personnel, as detailed below.

1. Reorganization of its corporate structure



(1) Rationale of Reorganization

In order to promote the development and execution of asset management strategies that integrate tenant leasing and facility management of JLF under consistent leadership, and to achieve stronger internal growth, MLP decided to transfer a part of function originally belongs to Acquisition & Leasing Department to Property

Management Department. MLP also decided to change the names of the Departments; from Acquisition & Leasing Department to Investment Department, and from Property Management Department to Asset Management Department.

See Appendix 1 for the MLP's organization chart after this change.

(2) Effective Date

February 1, 2021

2. Reassignment of personnel

Name	Until January 31, 2021	From February 1, 2021
Yasushi Ogaku	Director, General Manager of Acquisition & Leasing Dept. and Property Management Dept.	Director, General Manager of Investment Dept.
Satoshi Kikkawa	Deputy General Manager of Property Management Dept.	General Manager of Asset Management Dept.

(Note) See Appendix 2 for Profile of the new important employee.

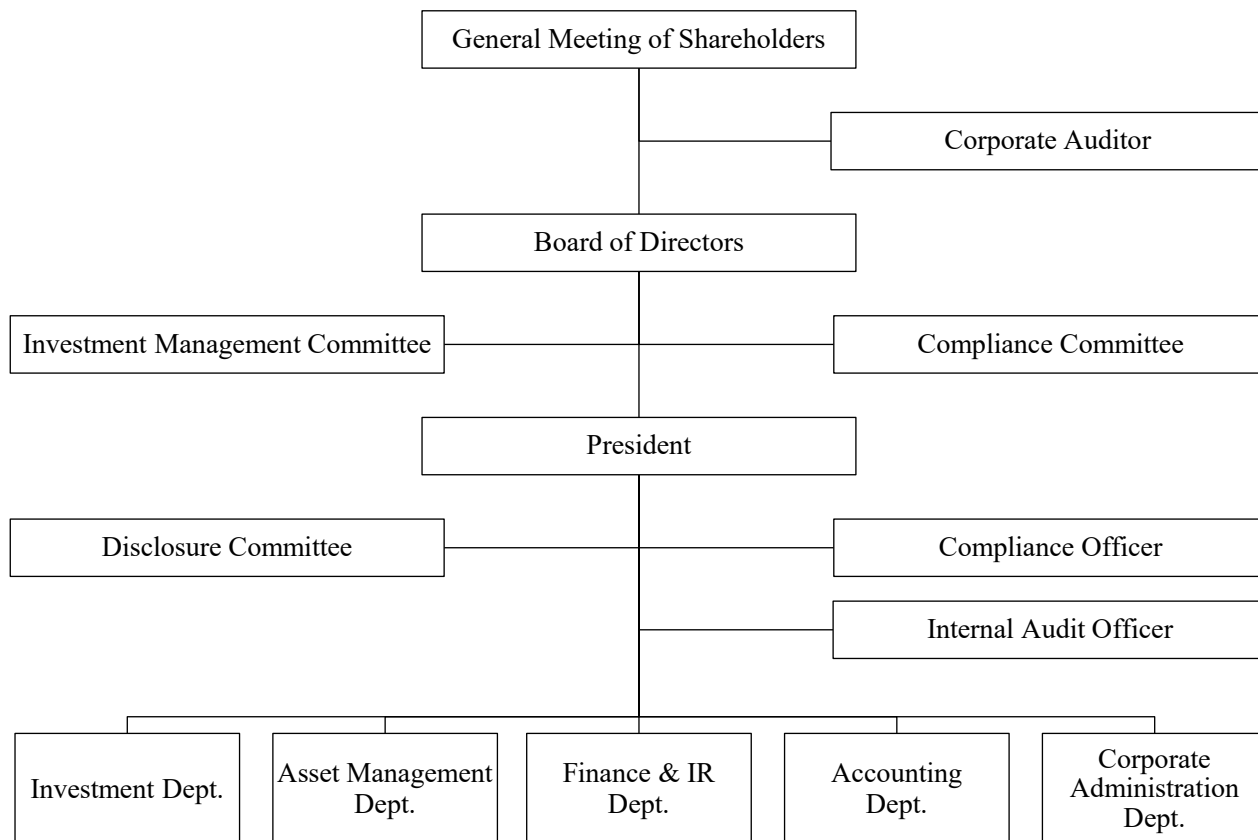
MLP will follow all the required procedures, including notification, in accordance with the Financial Instruments & Exchange Act, the Building Lots and Buildings Transaction Business Act, and other applicable laws and regulations.

(End)

*JLF's website: <https://8967.jp/en/>

This notice is the English translation of the announcement in Japanese on our website. However, no assurance or warranties are given for the completeness or accuracy of this English translation.

MLP's Organization Chart (From February 1, 2021)



Profiles of Mr. Satoshi Kikkawa

Job title	Name	Profiles	
General Manager of Asset Management Dept.	Satoshi Kikkawa	January 2006	K.K. daVinci Advisors. (Currently K.K. DA Holdings)
		January 2010	TOKYU LIVABLE, INC.
		August 2012	TORANOMON ASSET MANAGEMENT Co., Ltd.
		July 2017	Global Logistic Properties Inc. (Currently GLP Japan Inc.) Seconded to GLP Japan Advisors Inc.
		January 2019	General Manager of Portfolio Management Dept. of GLP Japan Advisors Inc.
		July 2020	Deputy General Manager of Property Management Dept. of MLP
		February 2021	General Manager of Asset Management Dept. of MLP (Expected)