



KANAMIC NETWORK

Supplementary Materials for the Issuance

July 15, 2021 Stock Code : 3939

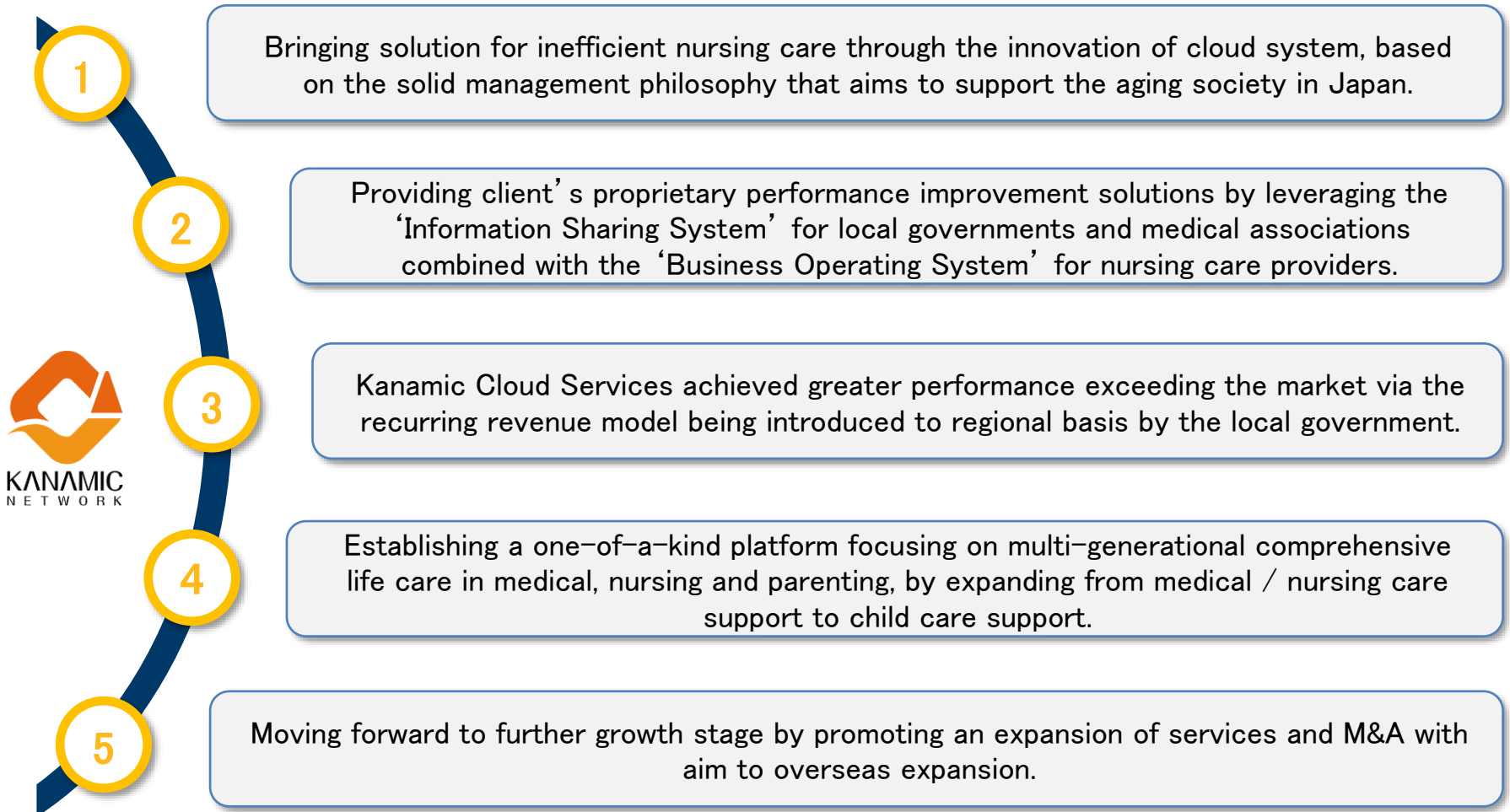
株式会社 カナミックネットワーク

Note:

Japanese version material shall prevail in all meaning and wording for this document. This translated version is for sole purpose of a supplementary material and is used for reference purposes only.

Kanamic Network (3939)

~ Strong business model that is sustainably scalable ~



Features of financing method

~ Simultaneous issuance of convertible bonds and warrants, together with share buyback ~

Benefits of convertible bonds (Immediate financing)

- 20 billion yen (Immediate financing)
- UoP: M&A funding for business expansion
- Issuance over par (100.2)
- 0% Interest Rate (Zero coupon)
- Initial convertible price +135%
- Reset Convertible price at 1.5 years
- Minimum exercise price after reset is fixed to the closing price of the resolution date



Benefits of warrants (Flexible financing)

- 3 billion yen (Future Financing)
- UoP: M&A funding for business expansion
- Exercise controlled by the issuer (Suspension of exercise)
- Fixed Dilution
- Minimum exercise price is set to the closing price of the resolution date
- Possible to raise capital at higher share price in an ascending stock market

Scheme that allows the benefit of both CBs and Warrants.
CB brings the immediate financing to a certain extent and warrant makes it possible to exercise while observing the movement of the market



Additionally, simultaneously implementing the Share Buyback aims to care about the exiting shareholders, and to mitigate the short-term impact of the demand and supply of the market.

Overview of the Convertible Bond and Warrant

	The 1 st Convertible Bond	The 3 rd Warrant
Procurement amount (est.)	2 billion yen	3 billion yen
Period	5 years	3 year
Issue price	100.2	-
Redemption price	100.0	-
Rate of interest	0.00%	-
Base price	Closing price on the resolution date/the condition decision date, whichever is greater	
Initial conversion premium	+ 135% of Base price	-
Conversion/Exercise price adjustment	1 time adjustment in 1.5 years. However, it will not be below the min. price	7% discounts of prev. closing price. However, it will not be below the min. price
Conversion/Exercise price (min.)	Closing price on the resolution date (7/15) ※Same price with share buyback price	
Potential dilutive shares	●● – ●● Shares	●● Shares
Dilutive rate	●● ~ ●● %	●● %
Rider clause	Put option (in 3 years) Soft call (120% in 2 years)	Suspension of exercise (Exercise control by the issuer)
Scheduled allotted	Credit Suisse	
Use of proceed	M&A for business growth	
Share buyback	500 million yen (The day after the resolution date, TostNet-3)	

Note:

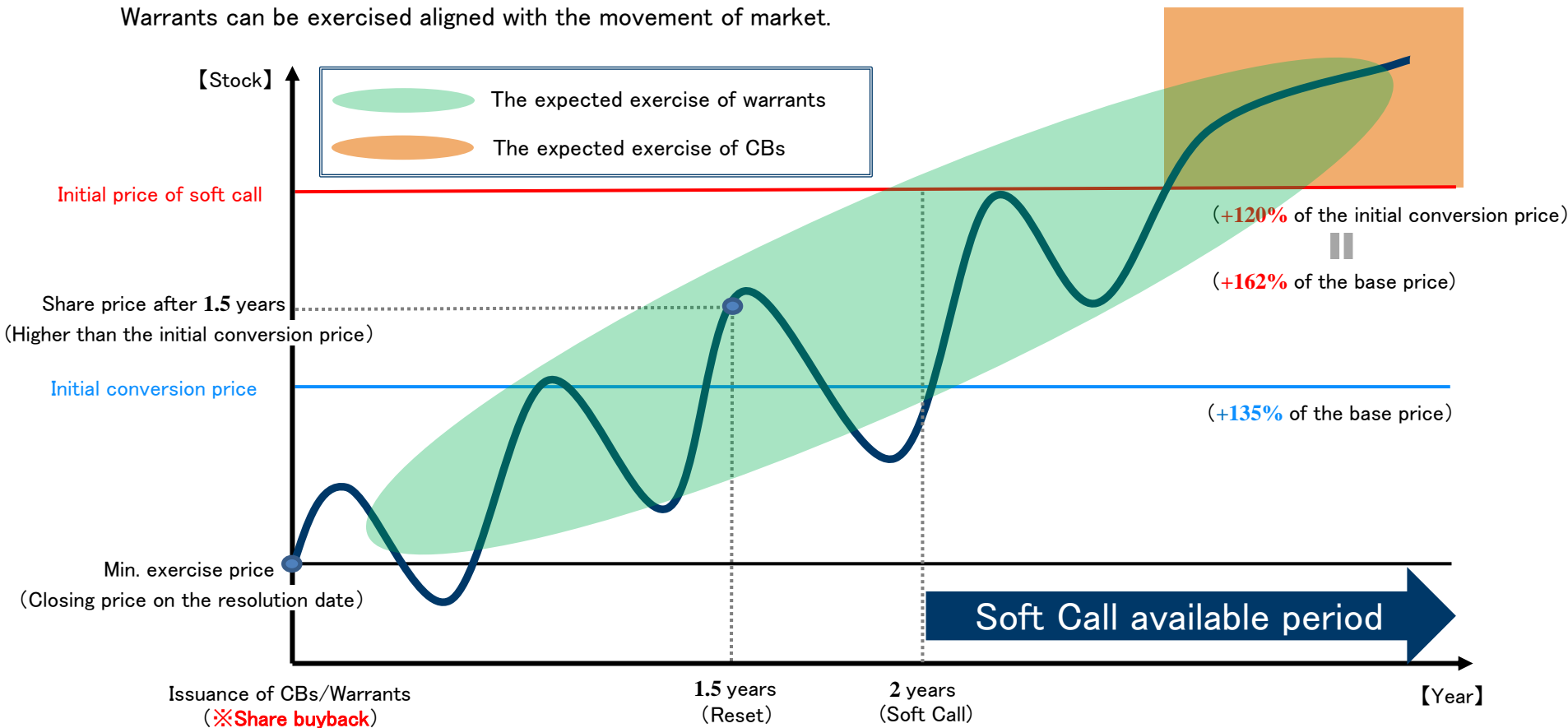
The amount to be raised is the estimated amount as of the date of resolution, but will increase or decrease depending on the amount to be paid in for convertible bonds determined on the date of determination of conditions, and depending on the amount to be paid in for stock acquisition rights determined on the date of determination of conditions and subsequent revision or adjustment of the exercise price and the status of exercise of stock acquisition rights. Dilution ratio is calculated on a ● basis.

① Financing – Convertible bonds and Warrants

~Case in which **there is NO conversion price adjustment** after **1.5 years**~

CBs are not likely to be exercised if the share price is not above the price of soft call (+162% of base price).

Warrants can be exercised aligned with the movement of market.



※Above stock price chart is only an image and is not a forecast or guarantee of the actual stock price of the company.

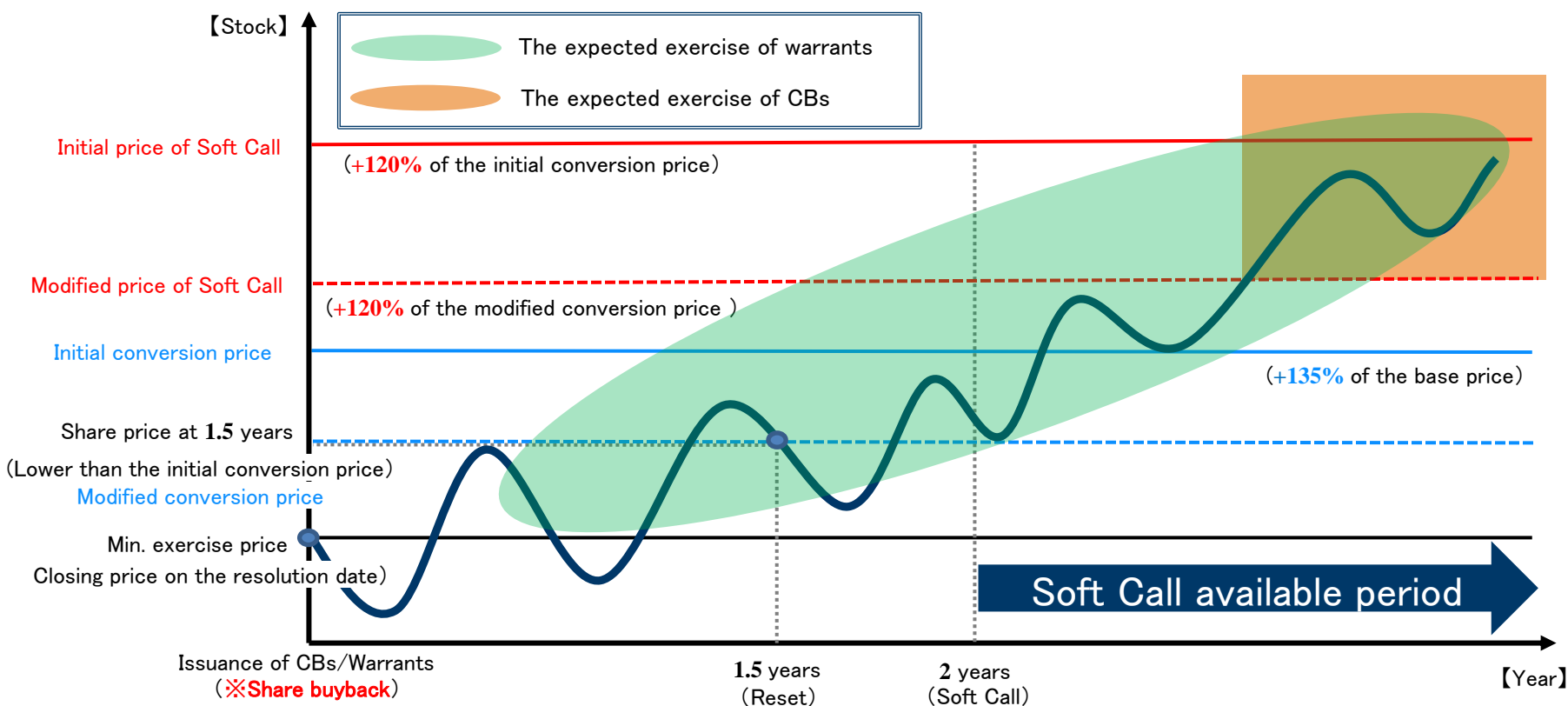
※Conversion of CBs and the exercise of warrants will be conducted by the allottee based on market trends and other factors, and will not necessarily be converted or exercised in accordance with the above image.

② Financing – Convertible bonds and Warrants

~ Case in which **there is conversion price adjustment** at **1.5 years** ~

The modified price of soft call will be reset to **+20% of modified convertible price**, where the share price should be above for promoting conversion.

Warrants can be exercised aligned with the movement of market.



※Above stock price chart is only an image and is not a forecast or guarantee of the actual stock price of the Company.

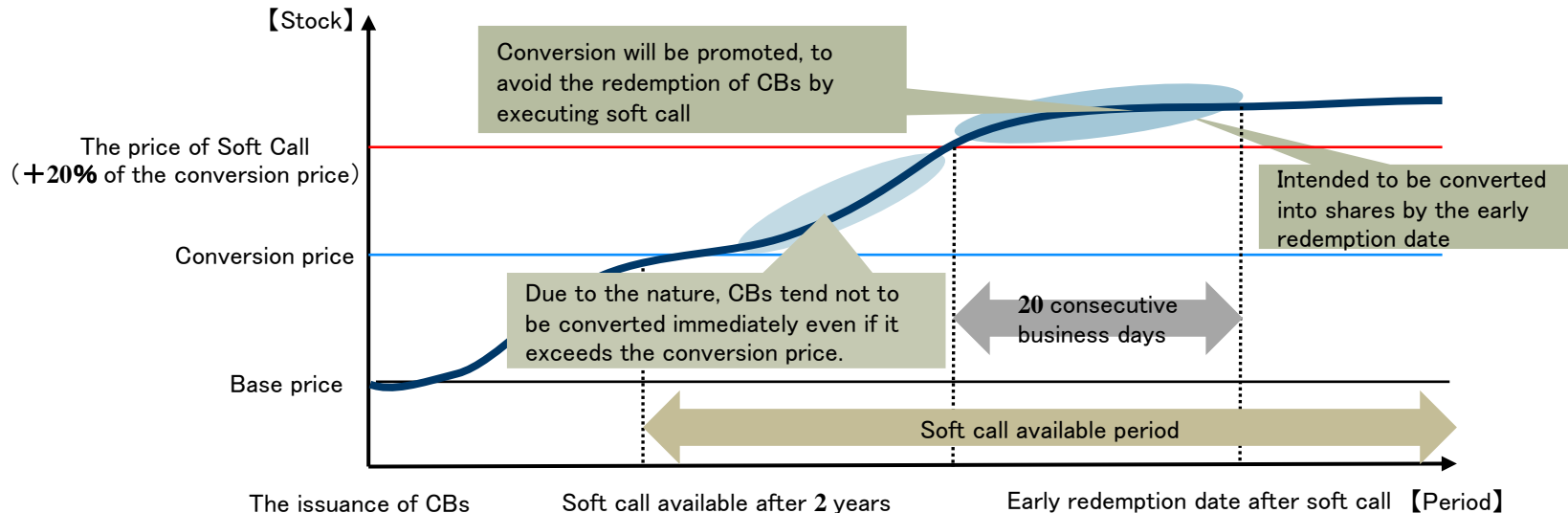
※Conversion of CBs and the exercise of warrants will be conducted by the allottee based on market trends and other factors, and will not necessarily be converted or exercised in accordance with the above image.

Appendix: Explanation of rider clause of CB

Soft Call

- The right for issuers to purchase CBs at par value, when the share price remains above the conversion price for a certain period of time.
- Since investors choose to convert based on economic rationality, they are in effect half-heartedly encouraging conversion.
- CBs can be redeemed early (soft call) at the company's discretion if the share price remains above the conversion price by 20% or more for 20 consecutive business days from 2023/●/●.

Diagram: Structure of Soft Call



Put Option

- The right for investors to make early redemption requests to the issuers (normally, early redemption request at face value (100%) can be exercised on a specific date)
- Likelihood of CBs being exercised would be increased when the stock price is significantly below the conversion price

Kanamic's M&A Strategy

■ The M&A Blueprint

Vision-driven M&A to strengthen and broaden our
"Contents", "Reach", and "Platform",

Kanamic's Purpose & Values:

**"Helping People and Communities with a Cloud Service for ALL
Stages in Life"**

**PHR Solutions: Empower children, adults
and seniors alike with Personal Health Data**

Contents

**For a GLOBAL Userbase
(Japan and Abroad)**

Reach

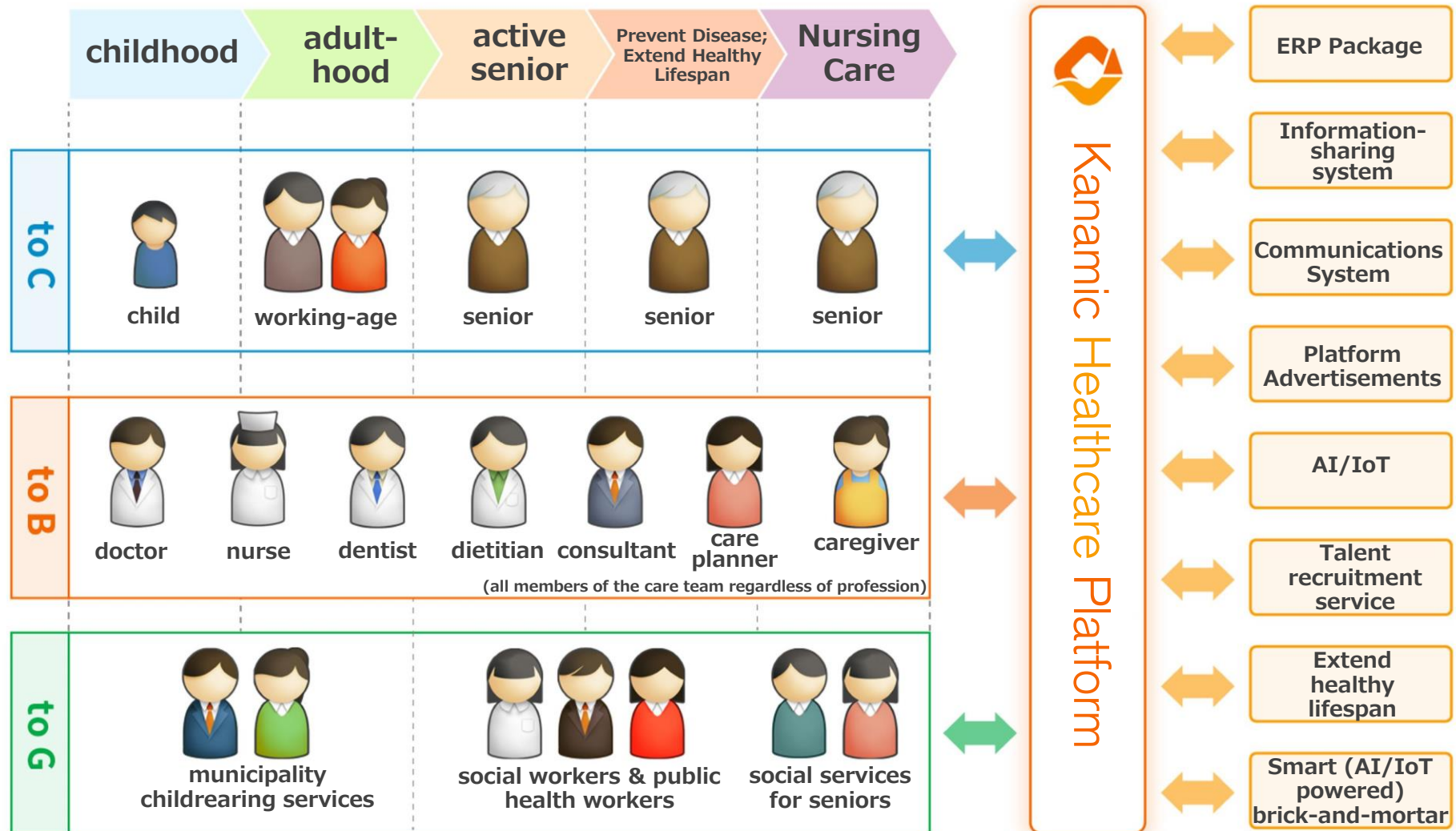
**Healthcare Platform for
Adding Value to People AND Businesses**

Platform

Kanamic's M&A Strategy

■ “Helping People and Communities with a Cloud Service for ALL Stages in Life”

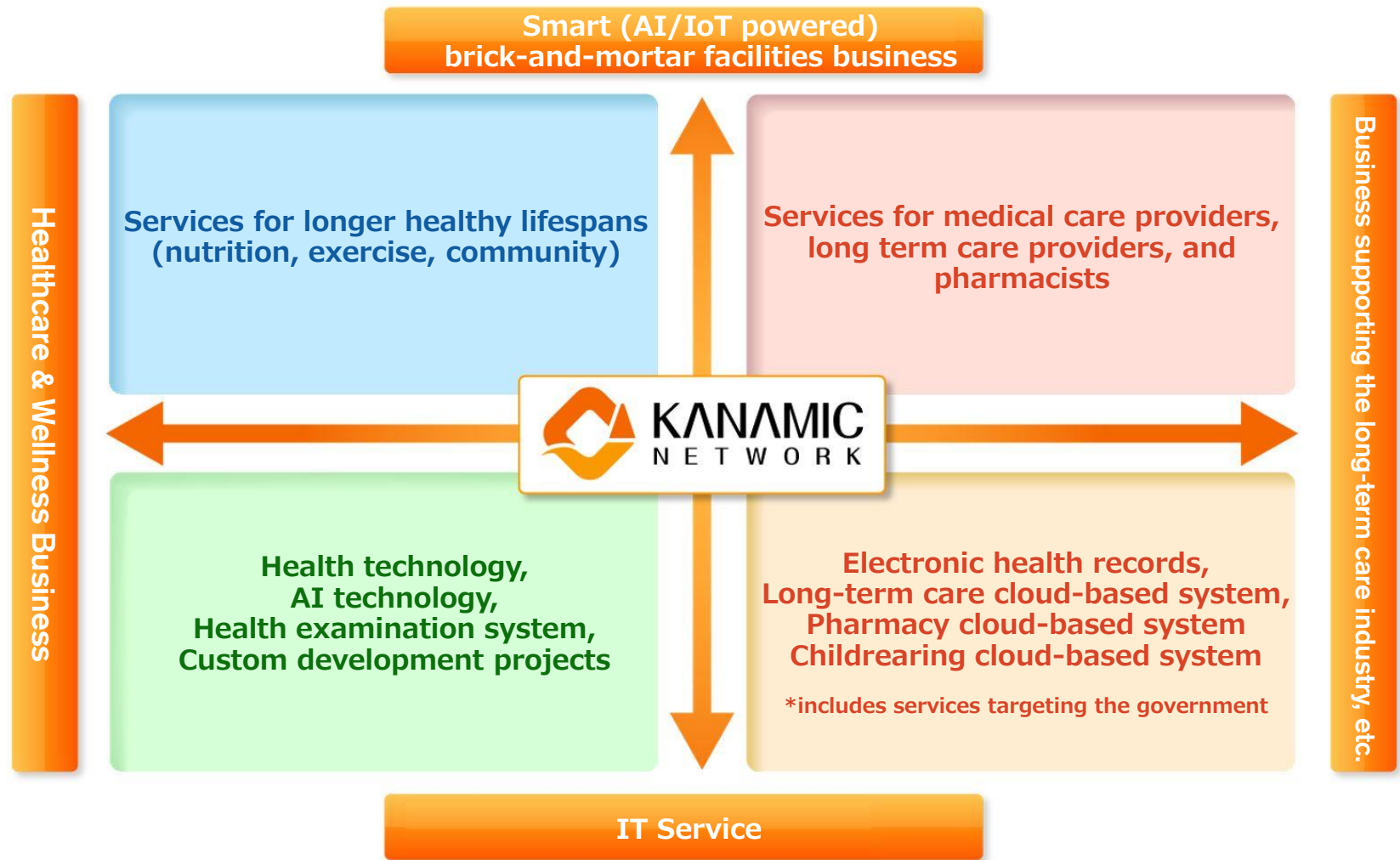
A global platform for helping people and businesses manage health data



Kanamic's M&A Strategy

■ Targeting M&A (and capital/business alliance) candidates that fit Kanamic's purpose & values

- Identifying strategic synergies to accelerate the realization of the Kanamic PHR Platform;
- Smart (AI/IoT powered) brick-and-mortar facilities present opportunities for data gathering



Neither Kanamic Network nor any of its applicable affiliates makes any representations or warranties, express or implied, as to the accuracy or completeness of the information in this presentation (this "Presentation"), other than the historical financial performance set forth herein. The Presentation speaks as of the date hereof. Kanamic Network and its respective affiliates, members, partners, stock holders, managers, directors, officers, employees and agents do not have any obligation to update any part of this Presentation.

Performance and other information herein about selected past Kanamic Network investments is intended to illustrate Kanamic Network's experience making investments. The past investments presented herein were selected by Kanamic Network on the basis of subjective criteria, and different persons might reach different conclusions as to individual investments' relevance and about which investments to include in such selection. Certain information herein refers to certain trends in the technology and related industries. There can be no assurance that such trends will continue. The investments included in this Presentation are not, and do not purport to be, representative of all investments, or all types of investments, previously made by Kanamic Network. The performance of these selected investments is not indicative of future performance.