

February 21, 2019

For Immediate Release

Real Estate Investment Trust Securities Issuer
2-5-1 Marunouchi, Chiyoda-ku, Tokyo
Mitsubishi Estate Logistics REIT Investment Corporation
Representative: Masaki Sakagawa, Executive Director
(Securities Code: 3481)

Asset Management Company
Mitsubishi Jisho Investment Advisors, Inc.
Representative: Akinori Nakajo, President & CEO
Contact: Masaki Sakagawa, Senior Executive
Director, General Manager, Logistics REIT
Management Department
TEL: +81-3-3218-0030

Notice Concerning Reorganization of Asset Management Company

Mitsubishi Estate Logistics REIT Investment Corporation (“MEL”) today announces that its asset management company, Mitsubishi Jisho Investment Advisors, Inc. (“Asset Management Company”), has decided to reorganize the corporate structure of the Asset Management Company (“Reorganization”), as outlined below:

1. Rationale of Reorganization

MEL will reorganize its current “Corporate Planning Department” into “Corporate Management Department” and “Human Resources and General Affairs Department”. Accordingly, the “Corporate Planning Department” will be eliminated. For further details, please refer to the APPENDIX.

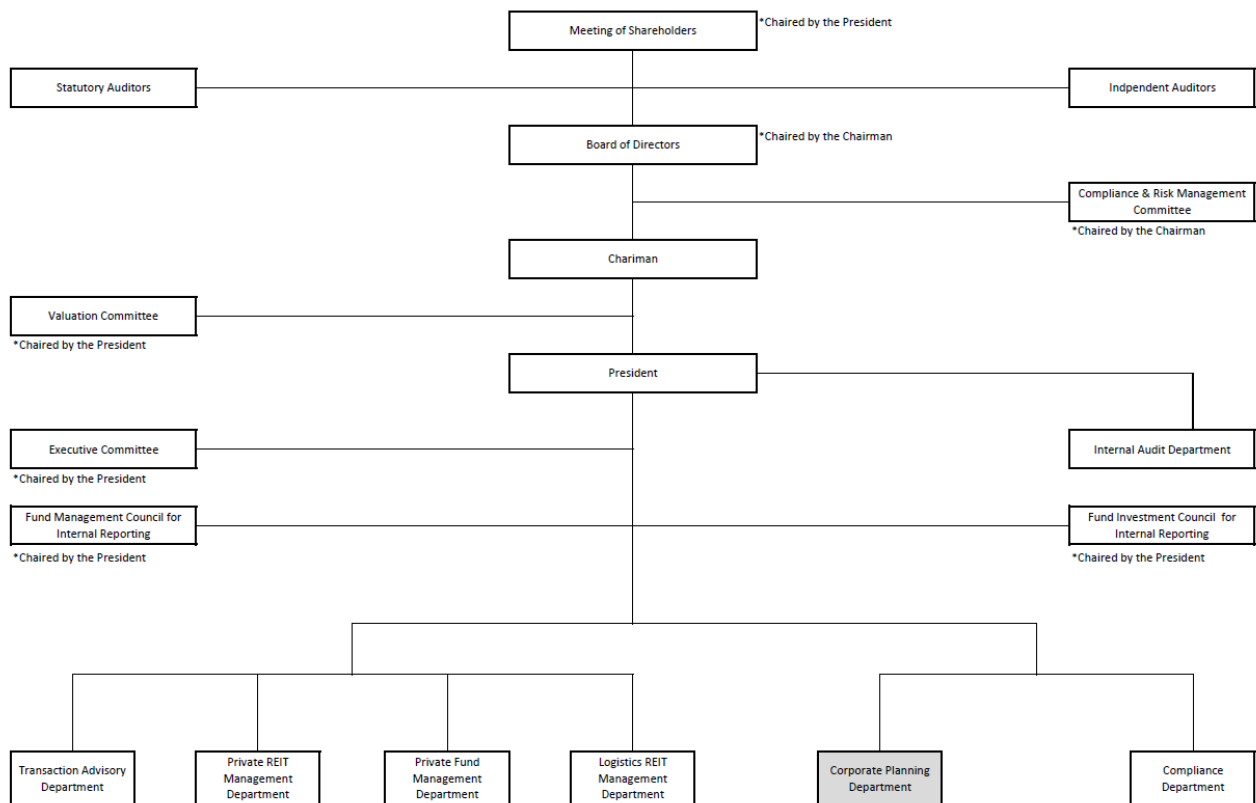
2. Effective Date

April 1, 2019

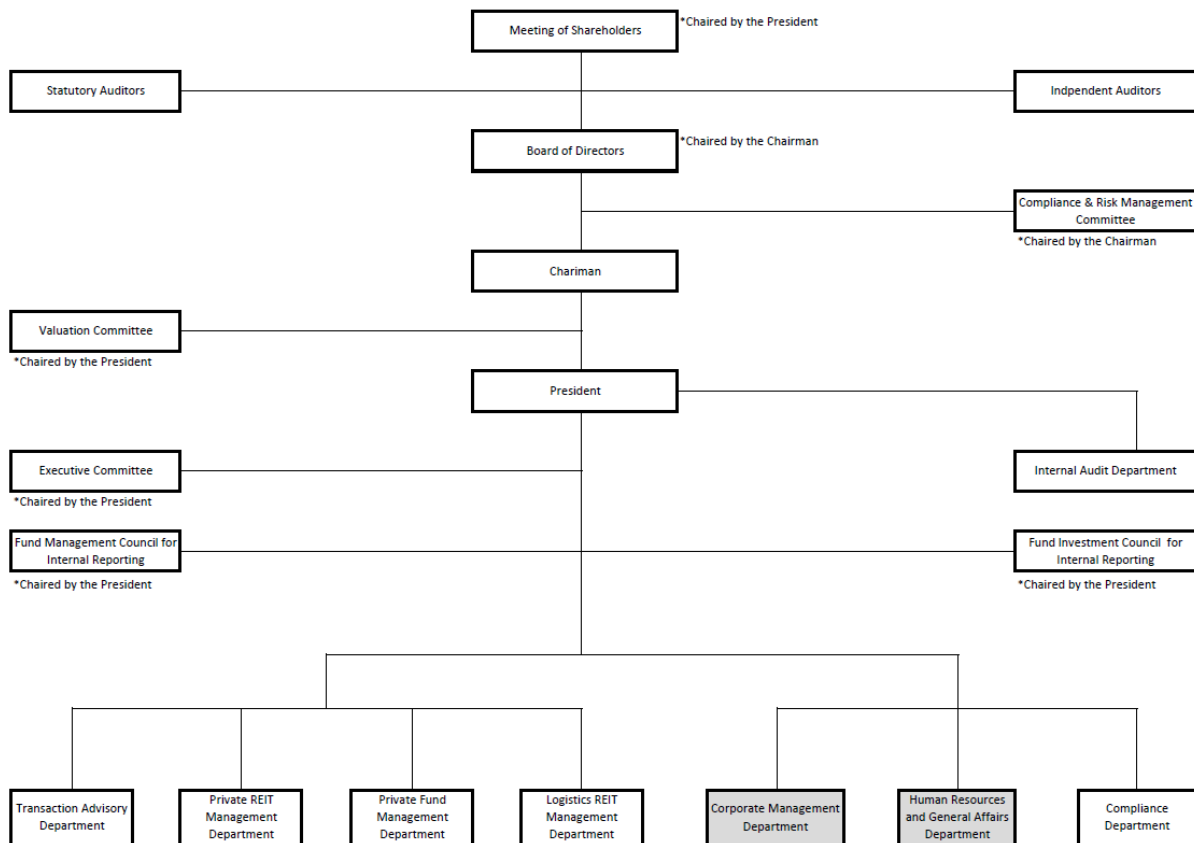
The change complies with the Financial Instrument and Exchange Law, the Building Lots and Buildings Transaction Business Law and other applicable laws and regulations. Asset Management Company will carry out all necessary notifications and other procedures.

For more information about Mitsubishi Estate Logistics REIT Investment Corporation, please visit:
<https://mel-reit.co.jp/en/>

APPENDIX 1 Asset Management Company's Organization Chart
(Before Reorganization)



(After Reorganization)



APPENDIX 2 Separation of Duties for the Asset Management Company
(Before Reorganization)

Name of Department	Separation of Duties
Corporate Planning Department	(i) Items related to corporate planning and management (ii) Items related to annual planning, budgeting, accounting (iii) Items related to human resources, payroll, welfare, ability development (iv) Items related to new product development (v) Items related to risk management (vi) Items related to general affairs, documents and others

(After Reorganization)

Name of Department	Separation of Duties
Corporate Management Department	(i) Items related to corporate planning and management (ii) Items related to annual planning, budgeting, accounting (iii) Items related to new product development (iv) Items related to IT
Human Resources and General Affairs Department	(i) Items related to human resources, payroll, welfare, ability development (ii) Items related to risk management (iii) Items related to general affairs, documents and others