

To whom it may concern

February 18, 2020  
MINEBEA MITSUMI Inc.  
IWASAKI ELECTRIC CO., LTD.

## **MinebeaMitsumi, Iwasaki Electric Began an IoT Street Lighting Joint Demonstration Experiment in Suginami Ward - LED Streetlights with Unique Wireless Connectivity -**

MINEBEA MITSUMI Inc. (MinebeaMitsumi) and IWASAKI ELECTRIC CO., LTD. (Iwasaki Electric) recently were provided the Suginami Ward demonstration field, and launched the “IoT Streetlight Demonstration Experiment”, which pioneered the smart city project. The test site will be equipped with 11 smart streetlights and one environmental sensor near the north exit of Nishi-Ogikubo Station. A unique feature of this set up is that the streetlights equipped with our own wireless connectivity form a network so streetlights and sensors can be centrally managed.

The smart LED road/streetlights jointly being developed by MinebeaMitsumi and Iwasaki Electric can freely control the amount of light via wireless communication, enabling monitoring of lighting status and power consumption, while streamlining operation management and reducing power costs at the same time. Furthermore, combining environmental sensors makes it possible to acquire various data, such as temperature, humidity, atmospheric pressure, wind speed, etc., and provide information services to residents.

Through this project, we will contribute to energy and labor saving in Suginami Ward management, improvement of convenience for residents, and realization of safe and secure town development.

**[Installation Site]**

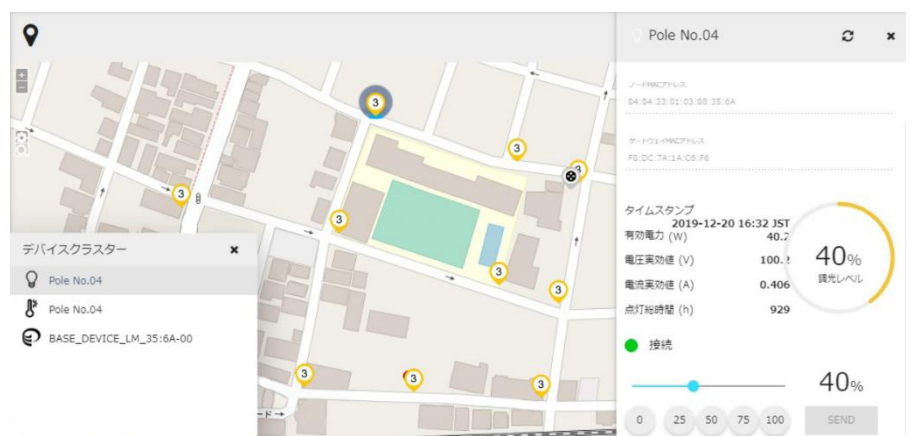


Smart Streetlight



Environmental Sensor

**[Streetlight Information Monitoring Screen]**



### [MinebeaMitsumi Smart City Solution]

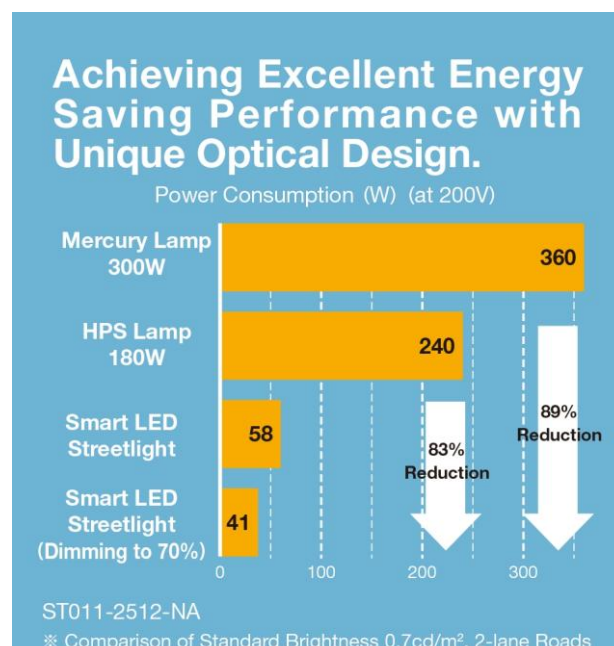
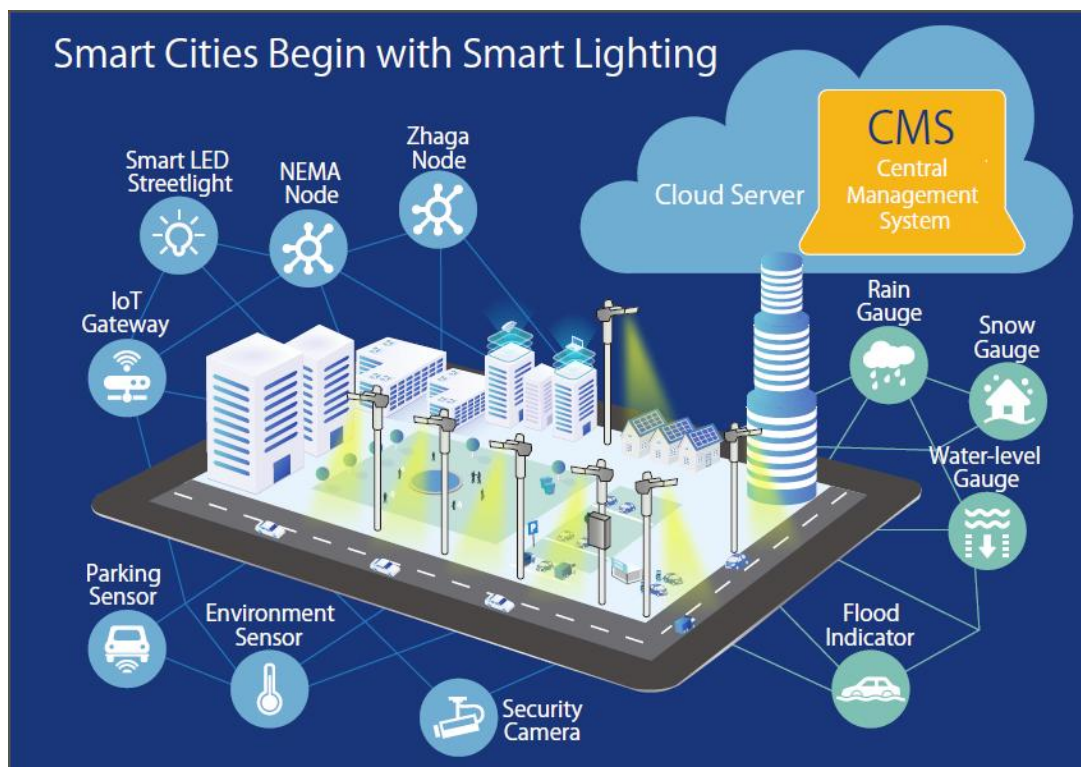
MinebeaMitsumi has developed a high efficiency LED streetlight with wireless functionality together with Iwasaki Electric with whom we have a business alliance, and been promoting the “[Smart City](#)” project since 2015.

We are building a system that can collectively monitor functions related to urban life by centrally managing the LED streetlights in the cloud with wireless functionality, making it possible to monitor lighting time and power consumption, and combine various sensors (environmental sensors, parking sensors, etc.), power meters, surveillance cameras, etc.

We continue to take on the challenge of evolving lighting equipment devices with various added value beyond simple lights, such as energy saving, enhanced convenience for urban life, and improved safety.

#### \* About 6LoWPAN: The communications system supporting MinebeaMitsumi's smart city

- Constructs a mesh network that is effective in areas with many trees and buildings.
- If communication goes down, the LED streetlights with wireless functionality will automatically build a new network.



### **[About the MinebeaMitsumi Group]**

MinebeaMitsumi is a comprehensive precision components manufacturer that integrates a wide range of cutting-edge technologies, from ultra-precision machining technologies, such as miniature and small ball bearings, which boast the No.1\* global market share, to motors, sensors, semi-conductors, wireless technologies. We create new value through difference and contribute to the age of IoT (Internet of Things) as an Electro Mechanics Solutions™\*\* provider.

Established: July 16, 1951

Capital: 68,258 million yen (As of March 31, 2019)

Representative: Yoshihisa Kainuma, Representative Director, CEO & COO

Outline of Business: Machinery Components Business, Electronic Devices and Components Business, Automotive, Industrial Machinery and Home Security Unit Business

Common Stock Listings: Tokyo and Nagoya

Consolidated Net Sales: MinebeaMitsumi Group 884,723 million yen (April 1, 2018 - March 31, 2019)

U-Shin Group 148,553 million yen (January 1, 2018 - December 31, 2018)

\* Ball bearing market external diameters of 22mm or less. According to our research.

\*\* "Electro Mechanics Solutions" is a registered trademark in Japan of MinebeaMitsumi Inc. Its registration No. is 5322479.

### **MinebeaMitsumi Sustainability**

The MinebeaMitsumi Group believes that the mission of a company is to contribute to the sustainable development of the global environment and of humanity, not only through strict adherence to laws and regulations, but also through fair and proper business management in accordance with business ethics. To achieve this mission, we have established the "Five Principles" as our company credo, and on the basis of this credo, we have formulated the MinebeaMitsumi Group Basic CSR Policy and the MinebeaMitsumi Group's CSR Implementation Principles to guide our CSR activities.

We also stress the importance of and strive to fulfill the Ten Principles of the UN Global Compact, in which we announced our participation in 2012, and the Sustainable Development Goals (SDGs) adopted at the UN Sustainable Development Summit 2015.

Sustainability page <https://www.minebeamitsumi.com/english/corp/environment/>

### **[About Iwasaki Electric]**

Company Name: IWASAKI ELECTRIC CO., LTD.

Head Office: 1-1-7, Higashi-Nihonbashi, Chuo-ku, Tokyo 103-0004

Representative: President and Chief Executive Officer, Yoshitake Ito

Outline of Business: Manufacture and sales of various light sources, lighting fixtures, light environment equipment (ultraviolet, infrared, electron beam applications), etc.

Date of Establishment: August 18, 1944

Capital: 8,640 million yen (First Section of the Tokyo Stock Exchange) (as of March 31, 2019)

Number of Employees: Consolidated: 1,899 people (as of March 31, 2019)

#### **Media Inquiries:**

MinebeaMitsumi Inc. Corporate Communications and Investor Relations Office

Phone: +81-3-6758-6703 Fax: +81-3-6758-6718 E-mail: [koffice@minebeamitsumi.com](mailto:koffice@minebeamitsumi.com)

Iwasaki Electric Co., Ltd. Public Relations Department

Phone: +81-3-5846-9012 Fax: +81-3-5846-9034 E-mail: [info@eye.co.jp](mailto:info@eye.co.jp)